



PROXLL

Döllken Lighting

LESS IS MORE BUT QUALITY STANDS

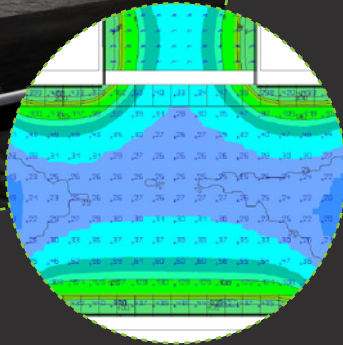
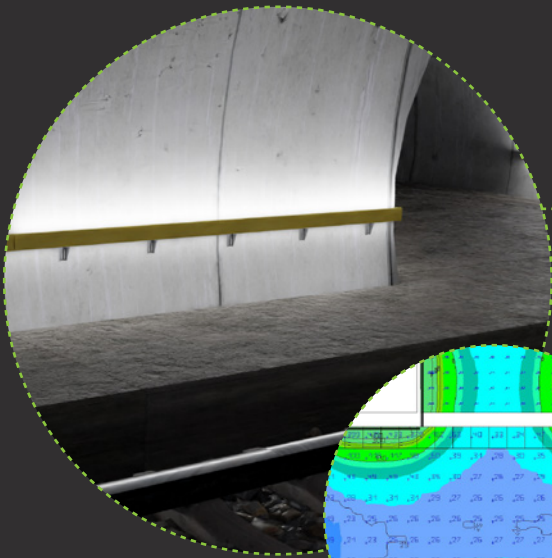
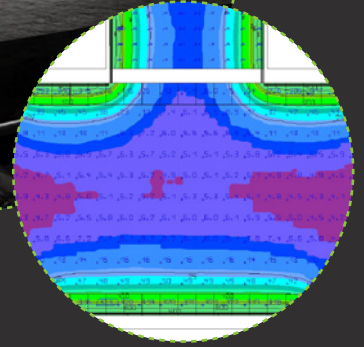
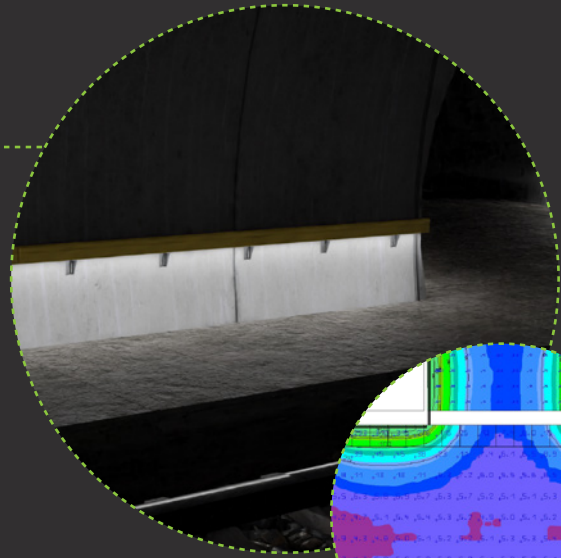
The solution is designed to meet the EU requirements of tunnel emergency handrail lighting. With this solution our customers can invest, with the benefit of adding light features without changing the entire solution.

OUR DESIGN – YOUR CHOICE

Installation has been on mind to limit unnecessary components, for both road and rail market.

EMERGENCY LIGHT ON GROUND

In train tunnels the requirement of 1 Lux on the floor are met with our low power LED strip.



CROSSING POINT

In train tunnels the requirement of the crossing areas are met by using potentially all three profiles with some different LED strips to accommodate the wanted light output.

LIGHTS ON SIGNS

In train tunnels the requirement on signs are met with our medium range LED strips.

